



# SEVERE WEATHER

## Bus Cancellation and School Closures

### How do we make school closure and bus cancellation decisions?



- Student Transportation Services of Waterloo Region (STSWR) bus operators start monitoring road and weather conditions early in the morning.
- A recommendation to make any bus cancellations or school closures is discussed with the Director of Education.
- **Transportation cancellations does not automatically mean schools are closed**



### What time do we make decisions?

- We try to make any decisions by 6:00 a.m.

### Where do I find cancellation information?

We communicate this information by:

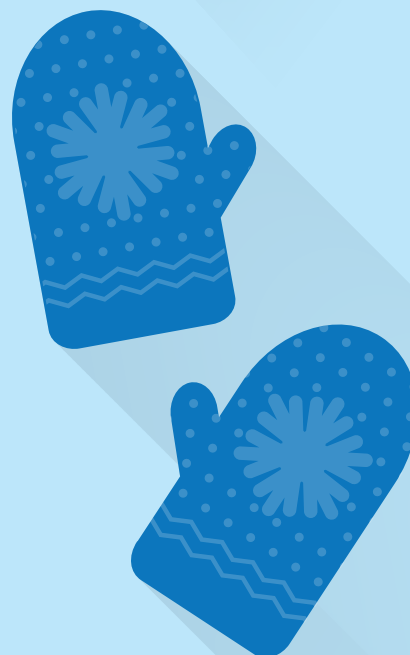
1. Our website [www.wrdsb.ca](http://www.wrdsb.ca)
2. School Websites
3. Our Twitter account @wrdsb
4. Local media



### How do frigid temperatures affect closures?



- Frigid temperatures are temperatures at  $-35^{\circ}\text{C}$  with wind chill or colder.
- We monitor Environment Canada's wind chill index by 5:30 a.m.
- If temperatures are forecasted to be  $-35^{\circ}\text{C}$  or colder with the wind chill at 7:00 a.m. **buses will not operate**
- Schools may be open to students who can safely arrive at school under supervision or direction of their parents.



### Important reminder

- Frost bite can happen within minutes of skin being exposed during frigid temperatures, please dress appropriately
- Crossing Guards may not be available as a result of frigid temperatures.

Parents have the option of keeping their children at home, or picking them up before the regular dismissal time when concerned about weather conditions.

