



Meadowlane Public School

236 Forestwood Drive, Kitchener, Ontario N2N 1C1

Tel: (519) 579-5030 Fax: (519) 579-2851



Save the Date!

Sept. 18-29	Toonies for Terry Campaign
Sept. 29	Terry Fox Run 2pm
Oct. 9	Happy Thanksgiving (no school)
Oct. 11	School Council 7pm (library)
Nov. 7	Photo Day
Nov. 8	School Council 7pm (library)
Nov. 17	PD Day (no school for students)
Dec. 25-Jan. 5	Christmas Break

Principal's Message

An exciting new school year has begun! Our staff welcomes all returning and new families to Meadowlane with excitement and much anticipation for the 2017-2018 school year. We hope all of you enjoyed your summer with family and friends and had the opportunity to re-energize! It was wonderful to see many of you at our Meet-the-Teacher BBQ. A huge thank you goes out to our School Council members for hosting this evening.

I would like to welcome back many returning staff members and introduce many new ones. Below is our staff list for 2017/18:

Teachers

Kindergarten	Amanda Spry (K1) Jane Jones (K2) Emily Charlebois (K3)
Gr. 1	Suzanne Bender Patricia Malina Ruth Wright-Gedcke
Gr 1/2	Mike Potochniak
Grade 2/3	Andrea Hill Ruth Wright Gedcke
Grade 3`	Fiona Morrison
Grade 3/4	Cristina Picassinis
Grade 4/5	Lori Croken
Grade 5/6	Sanja Ilic
Grade 6	Sharon McDonald

Early Childhood Educators

Tina Harrison (K1)
Jessica Gavin (K1)
Brooke Malchin (K2)
Jennifer Brodie (K3)

Educational Assistants

Wendy Munroe
Terri Penner
Nicole Dorais
Teresa Domanski
Heidi Geisler Morgan

Custodian

Ron Crawford
Mike Martin

Special Education (SERT) Beth Creighton
Planning Time Coverage

and SERT

Kindergarten Prep.

French

ESL

Anne Brennan
Anne Solie
Krystine Desrosiers
Devinder Bansal

Secretary

Kim Crawley
Jennifer Hurlbert

Each child has been provided a planner, which is an excellent tool for communication between home and school. We would greatly appreciate it if you would take some time to review with your child the expectations that are outlined in the planner. Every member of our staff is committed to putting students and student learning first. We will provide a caring, learning community where we motivate and challenge students and treat all who walk through our doors with kindness and respect.

A reminder to please check the website (www.mea.wrdsb.ca) for regular updates, or you may choose to subscribe to the website and receive regular emails whenever the website is updated. We will also be using School Day as a communication tool. This will be an effective way to communicate with families and to collect payment for school activities online. If you have not already registered for school day, please be sure to do so as soon as possible.

Looking forward to a great school year!

Rebecca Jutzi
Principal

Information and Reminders

Goodbye to Ron Crawford!

After many years with the WRDSB and a long time at Meadowlane P.S., our head custodian, Ron Crawford is retiring! We wish him all the best in the future and will miss him at the school. Ron’s last day with us will be Friday, September 29th.

Student Drop off Times

Please note that our supervision in the morning does not begin until 9:00 A.M. We would ask that students do not arrive at school prior to this time as there is no yard supervision in place. As well, it is not permissible for students to be dropped at the main office or their classroom prior to this time to be supervised. This is especially important during inclement weather as we do not want students to be standing outside in the rain/cold for extended periods of time. We appreciate your understanding and cooperation in adhering to our drop-off times.

Please help your child to be at school when the bell rings at 9:10. This minimizes disruption for classrooms during learning time, and it places the value of time management on students – a life-long skill. Please also remember to have your child check in at the office, if he/she is late. If the announcements are on, he/she will need to wait quietly in the front foyer until announcements are finished to check in and receive a late pass.



Daily Schedule

Our Daily Timetable will be the same this year as it was last year. There are 10 periods per day and each period is 30 minutes long. We will continue to have two 40 minute nutrition breaks during which the students will eat their lunch for 20 minutes and then have outdoor play for the remaining 20 minutes.

Period 1.....9:10– 9:40
Period 2..... 9:40-10:10
Period 3 10:10-10:40
Period 4 10:40-11:10
1st Nutrition Break 11:10-11:50
Period 5..... 11:50-12:20
Period 6 12:20-12:50
Period 7 12:50-1:20
2nd Nutrition Break 1:20-2:00
Period 8 2:00-2:30
Period 9 2:30-3:00
Period 10 3:00-3:30

School Council

Please consider joining School Council this year! School Council provides a great opportunity to meet parents in the community, learn more about what is happening at the school, and is a great way to contribute to your school and community. We look forward to seeing you at our next meeting on October 11 at **7:00 pm** in the school library.

Milk Program

Once again this year, students are able to purchase milk (chocolate or white) daily at both Nutrition Breaks. The cost is \$1.00 each or a sheet of 12 for \$10.00. Individual tickets and sheets of 12 are purchased through Mrs. Crawley at the office.



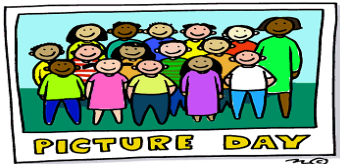
Pizza Days

Pizza day will begin Friday, October 6th. The process will be different this year. **All pizza purchases need to be made on School Day and will happen once/month.** You will be able to select one or two pizza slices/week with cheese or pepperoni. Please refer to the information letter that came home this week.



Student Picture Day

Student picture day will be on **Tuesday, November 7.** Students will have their individual photos taken on this day, and a proof of that photo will be sent to you. At this time you can decide on the pose and package, if you wish to purchase the photos. We will also have class pictures taken at that time.



Reminder about Bussing

If your child is eligible to ride the school bus but you have decided that they **will not** be riding the bus this year, then please contact the office. A “Do Not Ride” form will need to be signed stating that you have made alternate arrangements for drop-off and pick up.



Safety at Meadowlane

Just a reminder to all parents and visitors that when you enter through the front doors, **you must sign in at the office.** There are times when parents need to deliver a lunch or backpack to their child. This is not a problem but please visit the office and we will have the student pick it up here in the office. Please remember to **sign out** in the office before you leave. It is important that the staff are aware of any visitors in the school. This helps to keep all of our students safe.

Mabels Labels

Meadowlane has a fundraiser in place with Mabels Labels. We strongly suggest that you label everything that your child brings to school.

This helps cut down on our lost and found. If you are interested in purchasing labels for your students clothing please visit www.mabelslabels.com and be sure to find Meadowlane P.S. under the “Support a Fundraiser” tab.

Medication at School

If your child requires medication (ie. Epi-pen, puffer, etc.) at school, you must provide the school with a properly completed medication form available through the school office. Board policy also requires that all medication be kept in a locked cupboard in the office. Parents with children who have life-threatening allergies, requiring an epi-pen, are asked to make sure this information has been communicated to the office.

Peanuts or Nut Products

At Meadowlane P. S. we have several students who have severe life-threatening food allergies.

The allergy includes any food that contains peanuts, tree nuts or peanut/nut oil. This medical condition can produce severe **reactions which can result in death within minutes.**

In a school setting, cross-contamination is the greatest risk for this type of allergy. Trace amounts of peanuts/nuts can be left on gym equipment, computer keyboards, and water fountains etc. and put the peanut/nut sensitive student at risk.

Although this may or may not affect your child’s class directly, please send foods to school with your child(ren) that are free from peanuts or nut products. We also ask that you avoid sending soy-based peanut butter alternatives as it is very difficult to distinguish between the alternatives and real peanut products. We sincerely appreciate your cooperation in avoiding the use of these products to assist in our continued efforts to create a safe, caring and inclusive learning environment for all students.

Nut-Free Zone



Please do not bring any products containing nuts (peanuts or tree nuts) into area.

Thank you for helping to keep our children safe.

ALLERGY FREE
TABLES
www.sleepyheadtable.com

Bicycle Safety

Please remember if your child rides his/her bike to school a helmet and a lock are necessary. Students must walk their bikes on school property.



Safety Drills

We are mandated to conduct various safety drills throughout the school year, including fire drills, violent intruder drills and tornado drills. These drills allow us to practise our procedures should an emergency situation ever arise. We have completed our 3 fire drills and our lockdown drill this fall.



Playground Safety

We want all students to be able to enjoy the playground in a safe manner. There are times when the playground is not open and students need to listen to the announcements. This includes times when it is very wet or when we have periods of freezing temperatures, when there is freezing rain, if the ground cover is frozen, or if there is a build up of snow and ice. Morning nutrition break is reserved for primary students and the afternoon nutrition break is for junior students.

Rules for students:

- No pushing
- No running on play structures
- No fighting
- No eating while on the playground equipment
- No throwing sticks, stones or other objects

The following are not allowed on the equipment: flip flops, skipping ropes, ropes, scarves or loose drawstrings on children's clothing. We make safety at play our major concern, and will be reminding our students and staff on a regular basis about the playground rules. We hope that you will reinforce them at home with your child. **We would ask that parents closely supervise their children before and after school if they choose to use the playground.**

Parking

Student Safety is a major concern at our school! **Please do not use the parking lot to drop off or pick up students.** It becomes a very unsafe place when cars are driving in and out during peak times of the school day, such as, before and after school. **Space to park is available on Glen Park Crescent or across from the school on Meadowlane Dr.** Stopping at the front of the school in the bus loading area is also restricted and by-law officers will issue tickets for this infraction. Please help us to keep our students safe by obeying the traffic and parking laws.

Use Crosswalks: Please remind your children to cross safely at the designated crosswalks when crossing Forestwood, McGarry, and Glen Park Crescent. We will have student crossing guards to help, as well as an adult crossing guard on McGarry.

Speaking and Listening Tips from Speech and Language Services

Telling stories - First read a picture book together with your child. Then have your child use the pictures and tell the story back to you using his/her own words. Encourage your child to use the names of the characters, where the story happened, the main events, a problem and the ending. Encourage use of connecting words like AND, THEN, NEXT.

What happens next? A child's ability to make predictions, inferences and think of different ways to solve a problem are important skills for school and life. You can help your child develop these critical thinking skills in a number of ways. While watching a movie or reading a book, talk about what might happen next. Think of a different ending. Talk about the character's feelings. When reading, talk about what is implied (e.g., Joe took off his sweater and wiped his forehead. What was the weather like? How do you know this?).