



How Can
You Help
Make
This
Reality?

Ways you can help to
support this project.

With the initial planning stages complete,
we are ready to move forward. We are
looking for resources and hands on help.

Do you have a good resource for purchas-
ing or for donations of any of the following:

- Trees, Shrubs, Plants
- Stonedust
- Landscape Rocks
- Mulch

I would like to help with the organizational
work:

- Fundraising
- Publicity
- Construction
- Gardening
- Other

I would like to give a monetary donation

- Yes, please find a cheque payable to
WEFI, in the amount of \$_____ or
donate online at www.shl.wrdsb.ca

A tax receipt will be given for minimum amounts of \$20

Name: _____

Phone #: _____

Email: _____

For more information on how you can help,
call the school at 519-744-4430 or email
our greening committee members (found on
the back of this pamphlet)

How this came to be....

**Students, staff, community members,
committee members and school council
members all shared their ideas and vi-
sions for our outdoor learning space.**

**In partnership with Toyota Evergreen, an
organization that supports school ground
greening in Kitchener-Waterloo, plans
were created from the input from all
stakeholders.**

The Greening Committee

If you have any questions, please feel free to contact:

Della Sousa—Greening Committee Chair
Della_sousa@wrdsb.on.ca

Jeannette Bible-Minielly—Teacher
Jeannette_bible@wrdsb.on.ca

Our Team Members

Silvana Hoxha—Principal
Neil Stewart—Teacher
Andrea Churchill—Teacher
Ann McRae—Teacher
Mark Jessop— Parent
Krista Long—Toyota Evergreen School Ground Greening
Consultant in partnership with
the Board

Sandhills Public School

1250 Victoria Street South
Kitchener, Ontario
N2N 3J2
519-744-4430



Sandhills Public
School

**Greening Project:
A Natural
Learning Space**



1250 Victoria Street S.
Kitchener, Ontario
N2N 3J2

519-744-4430



**Waterloo Region
District School Board**

The Plan

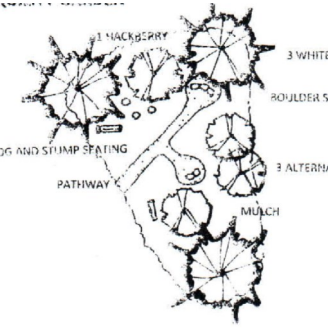
Now that the building construction has been completed, the Greening Committee has shifted their efforts to the creation of an outdoor learning space.

We have partnered with Toyota Evergreen to design an area that has elements of art, music, drama, gross motor movement, sensory and tactile development and imaginative play.

The new additions will provide a shaded area for children who wish to enjoy the outdoors in a quiet manner as well as many active areas for play and development. There are numerous benefits including increased student ownership of their school environment and increasing positive play.

Phase 1B: Tranquility Garden

This area will be placed in the far corner of our school yard which will create a quiet seating area for students in a natural setting. It will include log and stump seating with a natural writing surface. The various trees, bushes, and plants that are included in this plan are intended to attract birds and insects for student observation and exploration.



WHY?

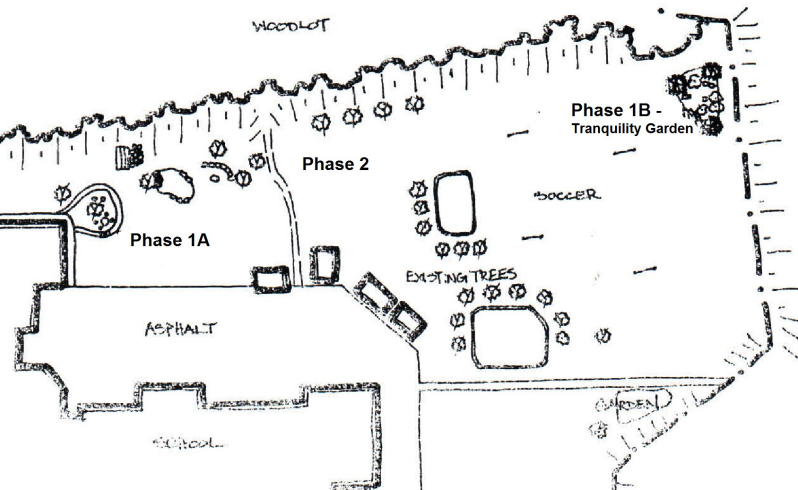
The vision of this project is to create a space that not only acts as an extension of the school building but also our community.

In providing and incorporating seating, elements of the curriculum and child development, we are expecting to see more classes using this space throughout the day, increased volume when school is not in session, as well as more enjoyable student use during nutrition break times.

The ultimate goal is for the space to be used and enjoyed by the school, staff and entire school community.

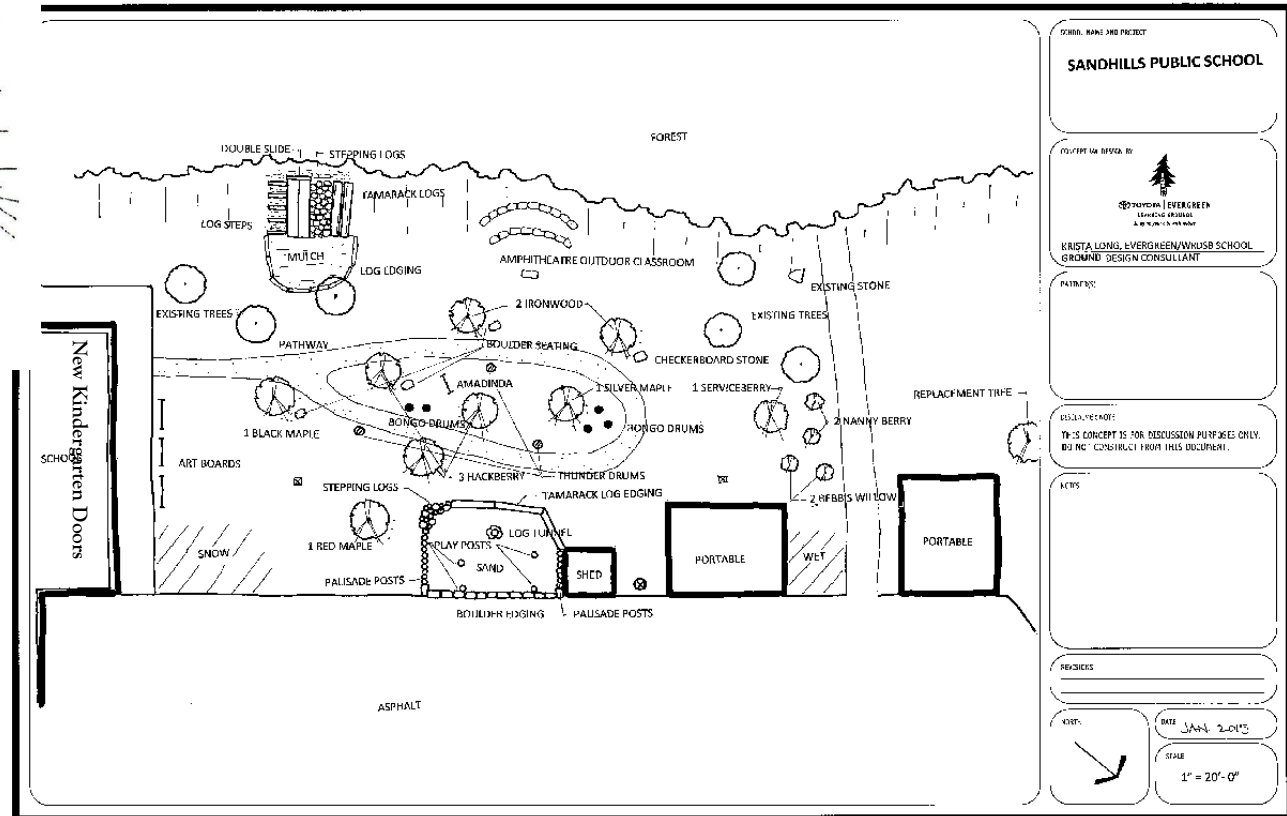
Phase 2

Phase 2 is currently in the early planning stages, more details will be provided as they become available. This phase is addressing the area currently referred to as 'the pond'.




Phase 1A: Outside of New Addition

This area will feature an amphitheatre, dual slide built into the hill with climbing features on each side, trees for shade, pathways for movement, a musical grove, art panels, and a large sand exploration area.



SCHOOL NAME AND PROJECT
SANDHILLS PUBLIC SCHOOL

DESIGNER OR DESIGNER BY

 KRISTA LONG, EVERGREEN/WINDSB SCHOOL GROUND DESIGN CONSULTANT

PATENT(S):

DESIGN/REVISED: THIS CONCEPT IS FOR DISCUSSION PURPOSES ONLY. DO NOT CONSTRUCT FROM THIS DOCUMENT.

REVISED:

DATE: JAN 2015

SCALE: 1" = 20'-0"